

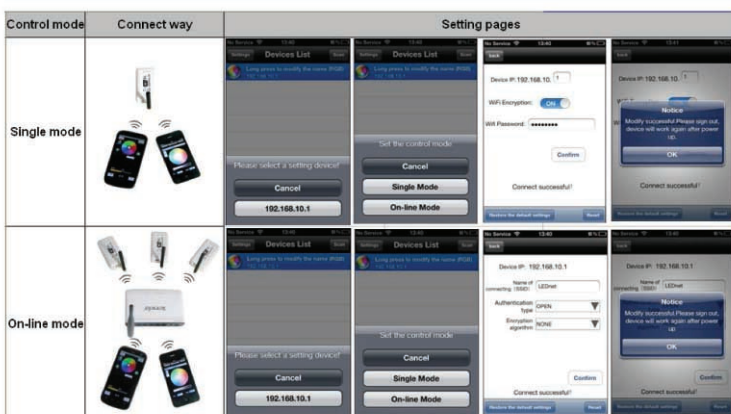
LED Wireless Modules

DAZZLED



A complete range of WiFi Modules available, these include standard dimming, RGB, RGB&W and DMX.

Each of the loadings on these units can be extended with the use of amplifiers



Item version: Single color version and RGB version.

1. Working Voltage: DC7.5-24V
2. Output channel: Can be used 3/2/1 channel
3. Output current: 4A*3
4. Connecting method: Common anode
5. Dimension: L105.5*W45*H23mm
6. Remote distance: 50 meters indoor, 100 meters outdoor
7. Software: Android system (at least version 2.3 with WIFI function) or IOS system, Language : English/Chinese.
8. Receiver sensitivity: 802.11b DSSS(-5dBm), 802.11b CCK (-10dBm), 802.11g OFDM(-15dBm)
9. Connect way: V+ R, G, B for LED Light, V+, V- for Power supply, ANT for WIFI signal reception.
10. Reset button(inside the controller): **Short press**: change from gradual change to strobe flash for single color Version. Or change in 27 modes for RGB Version.
Long press(more than 20s): Restore to factory settings. WiFi SSID for connection is "LEDnetXXXXXXXXXX", password: "88888888". IP: 192.168.10.1



Ideals (GB) Limited
Unit 3 Brookside Centre
Sumpters Way
Southend
SS2 5RR

Tel: 01702 460855
Fax: 01702 460655

email: sales@idealsgb.co.uk
web: www.idealsgb.co.uk