
Product Specifications

NAME: Wall Type Touching Dimmer

MODEL: QL-DIM-R1



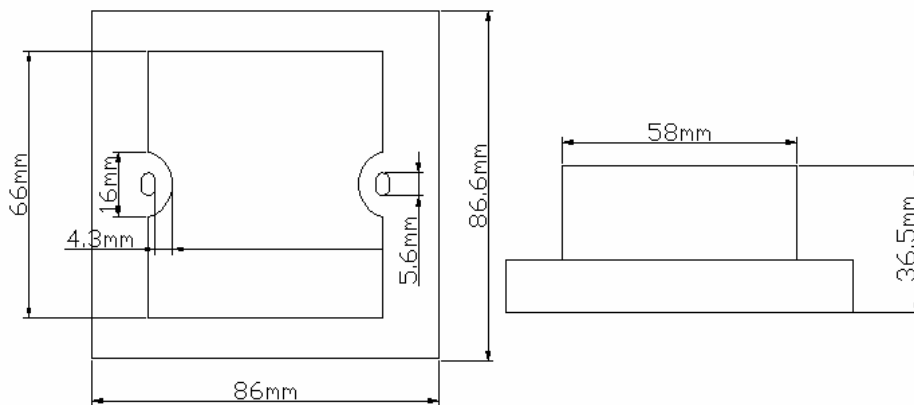
Summarization

Touch panel controller is our new research and development of new high-end controller, the glass panel design, appearance beautiful, vogue. Adopting high precision capacitance touch control chip, increased the touch sensitivity, reduces by mistake triggered. It is used for control of the led lighting lamps and lanterns, for example: point light source, such as soft article light; Has the wiring convenient, use the advantages of simple.

Technical Parameters

- working temperature: -20-60 °C
- supply voltage: DC12~24V
- output: 1 channels
- connection mode: common anode
- external dimension: L86 X W86 X H37 mm
- packing size: L90 X W90 X H60 mm
- net weight: 125g
- gross weight: 150g
- static power: <1W
- output current: <8A
- output power: 12V<96W,24V<192W

External Dimension:



Interface Specification



- ① POWER: GND
- ② POWER: VCC
- ③ OUTPUT: VCC
- ④ OUTPUT: CH1
- ⑤ OUTPUT: CH2
- ⑥ OUTPUT: CH3

Controller instruction:

Touch panel have 2 buttons and a pulley, the keys function as follows:



: Any state that can be opened or closed the controller outputs;



: For brightness select key, can choose different brightness, a total of seven change mode;

: Pulley touch buttons, promise brightness select key, as many as 128 touch points.

The key has two functions:



① pulley brightness select key, namely the control mode for M key mode (brightness), if must realize the pulley of brightness, can press this button.

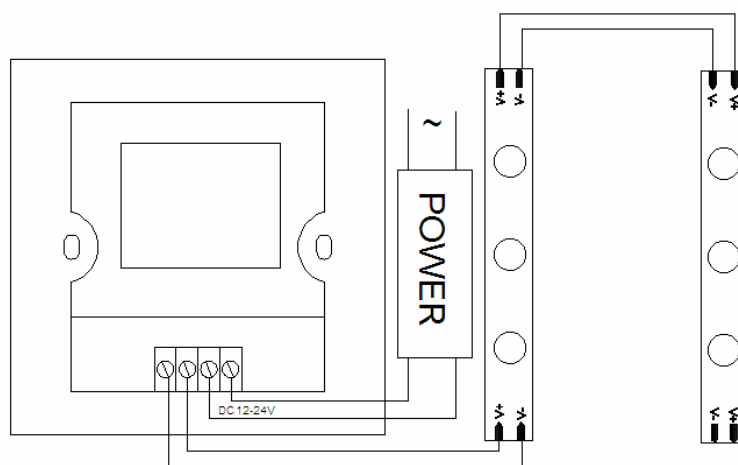
② the pulley brightness switch button: from 64 can be static color (brightness) switch.

Changes of M key as below:

Mode number	Function	Remark
1	10%	
2	20%	

3	30%	
4	40%	
5	50%	
6	60%	
7	70%	
8	80%	
9	90%	
10	100%	

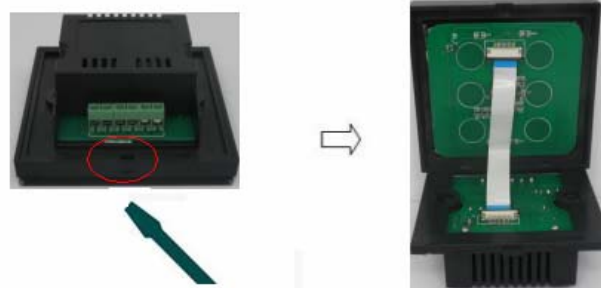
Typical Application



Installation Method

1, open the touch panel

(1) as shown in figure, use screwdriver in touch panel gently pry gaps, Take the panel;



(2) as shown in figure: the flat cable taken down. Open the lock connection seat, take the flat cable

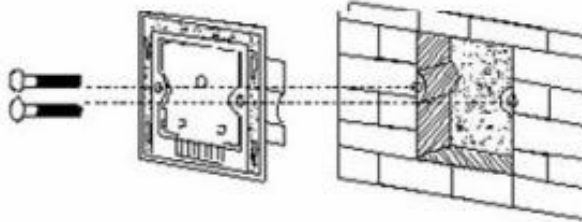


2, wiring

In the Typical Application. Reference typical application circuit.

3, installation switch base

As shown in figure, connected line will touch installed on the wall in the cassette controller, Screw in screw, make fixed in the wall, will be installed base to the wall.



4, cover touch panel

According to step up good row line, lock flat cable lock, cover panel.

Remarks:

- 1, Connect the load wire at first, following by the power wire; **Please ensure short circuit can not occur between connecting wire before you turn on the power;**
- 2, Power supply voltage range is DC12~24V, more than voltage range maybe will burnout the controller.